

FLAG ORDER 3434RE

8 May 1997

All SO Orgs and Units
RPFs
Senior Quals

THE RPF SERIES FLAG ORDERS

Reference:

FO 3434RE-1

RPF Series 1

THE REHABILITATION PROJECT FORCE

Cancels:

FO 3434RD

RPF Series 1

THE REHABILITATION PROJECT FORCE, and
all FO 3434 series FOs issued prior to this date

Never before has any organization provided a means for members who have failed the trust of the group to actually redeem themselves and terminatedly handle the cause of their destructive actions. Only the Sea Organization, using LRH's technology, extends this opportunity to its group members through the Rehabilitation Project Force program.

The objective of the RPF program is to restore to the individual his value to the group and to himself and to free him forever from any compulsion to commit harmful acts against his dynamics.

To further advance this objective and provide a fully standardized means of achieving it, a meticulous search through all LRH writings and Church policy on the subject of the RPF was conducted, with the aim of codifying its technical and administrative lines.

The result is a new series of Flag Orders regarding the Rehabilitation Project Force that is verified as totally on-Source, with all possible arbitraries standing in the way of a staff salvage action removed.

This new series replaces and cancels all prior Flag Orders regarding the Rehabilitation Project Force. These new issues are distinguished by standardized, sequential numbering. Every Flag Order in the new RPF Series is designated 3434RE, followed by a specific number such as "-1," "-2" and which corresponds to the RPF Series number. For example, RPF Series 1, entitled THE REHABILITATION PROJECT FORCE is numbered 3434RE-1, being the first issue in the series; RPF Series 5 is numbered 3434RE-5, and so on.

A table of contents listing all of the *new* RPF Series Flag Orders is attached, for reference, to this issue. These Flag Orders give the history and theory behind the need for an RPF, what its purpose is, the criterion for graduation and numerous other policies concerning the RPF.

Further, the series also covers the exact administrative and technical procedures which move the RPF member through all the steps of redemption to a fully rehabilitated staff member. Each step has been carefully worked out against Source material on every aspect of the RPF so that nothing is left uncoded.

The most significant advance in this series is the technical program—formulated strictly against what LRH specifically stated were the technical actions for rehabilitation. These have now been fully researched, codified and formed into

a checklist that is streamlined to *the* precise steps one must take to become a full product of the program.

And with advanced training standards that use *drilling* to increase skill to 100% perfection, there is literally *no* case that cannot be handled; there is *no one* who now cannot learn how to handle another individual with Standard Tech, and there is *no* PTS or ethics situation that need go unresolved, as this tech too has been fully codified with drills on every ethics tool imaginable.

Thus, any stops to full redemption are blown away and swift progress through the program is assured.

These Flag Orders codify the organization of the RPF, its technical program, rules of conduct—all aspects of the RPF—so that the program can be executed standardly in every Sea Org installation where an RPF exists.

All concerned with the administration and technical quality of the RPF program, directly or indirectly, are required to study and know this series and apply it when handling the RPF.

Properly applied, the technology in this series will get RPF members standardly and rapidly through their programs and returned to full duty, as completely rehabilitated, contributing staff members.

LRH TECHNICAL RESEARCH AND COMPILATIONS

Authorized by
AVC INTERNATIONAL

for
CHURCH OF SCIENTOLOGY
INTERNATIONAL

REHABILITATION PROJECT FORCE SERIES FLAG ORDERS

- FO 3434RE-1 RPF Series 1
THE REHABILITATION PROJECT FORCE
- FO 3434RE-2 RPF Series 2
RPF TARGET
- FO 3434RE-3 RPF Series 3
RPF MOTTO
- FO 3434RE-4 RPF Series 4
RPF ASSIGNMENTS
- FO 3434RE-5 RPF Series 5
TEST OF A PROJECT FORCE PERSON
- FO 3434RE-6 RPF Series 6
THE RPF SCENE
- FO 3434RE-7 RPF Series 7
RPF WORK
- FO 3434RE-8 RPF Series 8
RPF MESSING
- FO 3434RE-9 RPF Series 9
RPF GRADUATION
- FO 3434RE-10 RPF Series 10
RPF GRADUATION REQUIREMENTS
- FO 3434RE-11 RPF Series 11
AN OMITTED STEP
- FO 3434RE-12 RPF Series 12
RPF BOARD OF REVIEW
- FO 3434RE-13 RPF Series 13
PAY RESTORATION FOR CANCELLED RPF
ASSIGNMENTS
- FO 3434RE-14 RPF Series 14
HANDLING LIST ONE R/Sers
- FO 3434RE-15 RPF Series 15
RE-EDUCATION STEP
- FO 3434RE-16 RPF Series 16
APPROACHING RPF MEMBERS FOR PERSONNEL
POSTINGS

- FO 3434RE-17 RPF Series 17
RPF IN-CHARGE
- FO 3434RE-18 RPF Series 18
ALL RPF COURSE AND AUDITING DONATIONS
- FO 3434RE-19 RPF Series 19
WAIVERS FOR THE RPF
- FO 3434RE-20 RPF Series 20
RE: RPF PERSONAL GEAR
- FO 3434RE-21 RPF Series 21
RPF SUPPORT
- FO 3434RE-22 RPF Series 22
RPF NIGHTS OUT CANCELLED
- FO 3434RE-23 RPF Series 23
RPF—RIGHTS AND RESTRICTIONS
- FO 3434RE-24 RPF Series 24
RPF ROCKS AND SHOALS
- FO 3434RE-25 RPF Series 25
RPF ORGANIZATION
- FO 3434RE-26 RPF Series 26
RPF PRODUCT AND STATISTICS
- FO 3434RE-27 RPF Series 27
THE RPF TECHNICAL PROGRAM
- FO 3434RE-28 RPF Series 28
RPF—MATCHING CASES WITH PC AND AUDITING
TEAMS
- FO 3434RE-29 RPF Series 29
RPF USE OF THE ADVANCED COURSE MATERIALS
- FO 3434RE-30 RPF Series 30
THE RPF's RPF
- FO 3434RE-31 RPF Series 31
RPF GRADUATION—ADDITIONAL DATA

All SO Orgs and Units
RPFs
Senior Quals

(Cancels and replaces FO 3434RD, RPF Series 1,
THE REHABILITATION PROJECT FORCE.)

RPF Series 1

THE REHABILITATION PROJECT FORCE

Even if certain crew members as individuals wish to succumb, they have no right whatever to threaten or harm others by grave omissions, ignorance and errors. No one challenges the right of an individual to succumb. But he has no right to injure or murder others by omission or commission.

The RPF is in actual fact a system of recruiting by taking people off the lines who are blocking things and then not letting them back on lines until they are a valuable operating staff member.

When somebody goofs up badly and he's stopping lines and so forth, move him over to the RPF and get him off the lines—even tech lines. That has the virtue of letting the crew itself go on up to OT. Not all the time is being invested in those goofing badly. So they will move up the lines as they wish. But that gets them off the lines.

We now fill in the lines with non-R/Sing people and we can keep building it up and we will build it up toward an OT ship.

That's how it was figured out with that combination so the scene could be changed, and it worked. There were actual products coming out after that.

You sometimes don't get this done because you don't have anybody standing by to feed in. So you also have to get some recruits in to make this operate.

HISTORY

The Rehabilitation Project Force came into being on 7 Jan. 74.

Prior to the creation of the RPF it was found, on board Flag, that a number of PTSes were offloaded but the R/Sers who made them so were ignored and the ship went into Treason.

All efforts (spectacular on International lines by stats) to improve the scene produced little or nothing internally.

The reason no improvement could be made was due to unhandled R/Sers (many of whom were severely destructive and R/Sers dominant in Tech and Qual) who cancelled out any effort to improve things.

My conclusion was that unless the worst R/Sers were segregated from the crew, there would be no improvement. Hence the RPF.

As Tech was dominated by R/Sers no tech help could be expected under that organization.

Your attention is invited to the Psychosis HCOB which gives the behavior of an R/Ser. You should study this and believe it, as it is true.

So the general plan was to segregate R/Sers, clean up Tech and Qual and the ship and push the producers into OT state and let the destroyers save themselves if they could .

Short of that no hope could be seen.

To the RPF are assigned R/Sers, low OCA nonproducers or repeated stat crashers and overt product makers.

Like industry or any organization or ship before that date, when a crew member stole or embezzled or refused to work he was simply fired and offloaded. Scientology crew members objected to this. They demanded that provisions be made to rehabilitate the person. They had the idea that a person should be given a choice of being off-loaded or rehabilitated.

Management at that time acceded to crew demands and formed a Rehabilitation Project Force. It was, factually, a somewhat expensive decision.

Persons so assigned are to have 5 hours a day for study *or* auditing. They are to learn tech and get themselves handled in co-audit and are graduated from it only when they have released another fully, been of material help to the unit *and* are themselves fully cleaned up.

In the RPF the person receives counseling and does work on a team basis. The largest percent of persons assigned to an RPF graduate successfully and rejoin the crew. The majority of these give rave success stories. No other management organization undertakes such a function. They just fire people.

This was a new idea. After formation of the RPF things then started to straighten out.

The ship stands quite ready to accept people back off the RPF, fully handled, fully capable in life and valuable. The RPF also waits for anyone fouling up habitually and injuring ship and crew survival.

The RPF is proving to be one of the most successful salvage actions ever undertaken.

Any casualty from it simply was not fully handled case-wise.

The rest are a howling success and I'm happy for them.

L. RON HUBBARD
COMMODORE

Compilation assisted by
LRH Technical Research
and Compilations

SEA ORGANIZATION

FLAG ORDER 3434RE-2

13 February 1977

All SO Orgs and Units
RPFs
Senior Quals

RPF Series 2

RPF TARGET

(Taken from a telex written by LRH on 13 February 1977.
Issued as a Flag Order on 8 May 1997.)

My target for the RPF is every single person in it or assigned to it fully redeemed with excellent Expanded Dianetics* as recompiled and issued, every R/S terminatedly handled, no flubbed products and every graduate a credit to the SO and Scientology and himself or herself.

L. RON HUBBARD
COMMODORE

Compilation assisted by
LRH Technical Research
and Compilations

LRH:RTRC:ma

* Note: The technical program for the RPF now includes the full application of the recovered technology on Sec Checking and PTS checking for nonsurvival considerations and evil purposes on all dynamics, as covered by LRH in RPF Series 9, RPF GRADUATION.

SEA ORGANIZATION

FLAG ORDER 3434RE-3

7 January 1974

All SO Orgs and Units
RPFs
Senior Quals

(This FO was originally issued as FO 3873, RPF Series 11, RPF MOTTO. It is hereby reissued on 8 May 1997 to correct the FO number and the RPF Series number.)

RPF Series 3

RPF MOTTO

THE RPF IS WHAT WE MAKE IT.

THE RPF IS WHERE WE MAKE IT.

L. RON HUBBARD
COMMODORE

LRH:ed

SEA ORGANIZATION

FLAG ORDER 3434RE-4

circa 1974

All SO Orgs and Units
RPFs
Senior Quals

RPF Series 4

RPF ASSIGNMENTS

(Taken from an LRH advice circa 1974.
Issued as a Flag Order on 8 May 1997.)

Persons transferred to the RPF may only be transferred with cause.

In other words, these persons have to have demonstrated their treasonability to the ship or its organizations.

L. RON HUBBARD
COMMODORE

LRH:ma

SEA ORGANIZATION

FLAG ORDER 3434RE-5

24 February 1983

All SO Orgs and Units
RPFs
Senior Quads
Fitness Board Hat

(Cancels and replaces FO 3850, RPF Series 15,
TEST OF AN RPF'ER.)

RPF Series 5

TEST OF A PROJECT FORCE PERSON

THE TEST OF A PROJECT FORCE PERSON IS, CAN HE OR SHE MAKE
SOMEBODY BETTER? NOT GET BETTER, BUT MAKE SOMEBODY ELSE
BETTER.

L. RON HUBBARD
COMMODORE

LRFH:ma

SEA ORGANIZATION

FLAG ORDER 3434RE-6

9 February 1977

All SO Orgs and Units
RPFs
Senior Quals

RPF Series 6

THE RPF SCENE

(Taken from an LRH Flag Mission Order of 25 July 1976 and an LRH advice of 9 February 1977. Issued as a Flag Order on 8 May 1977.)

The RPF is not supposed to be a soft berth, featherbed scene with lots of sleep, no work and so forth.

The RPF is to get completions.

Each RPF member should have overall production targets and be individually targeted for completion.

The RPF must be operated so that it will achieve its title but that it is neither soft nor agreeable.

L. RON HUBBARD
COMMODORE

Compilation assisted by
LRH Technical Research
and Compilations

LRH:RTRC:jh

SEA ORGANIZATION

FLAG ORDER 3434RE-7

30 July 1978
Revised 8 May 1997

All SO Orgs and Units
RPFs
Senior Quals
Estates Orgs

(This Flag Order was issued as FO 3434RD-15RC, RPF Series 3, [same title]. It has been revised to delete data which was not written by LRH and to correct the FO and RPF Series numbers.)

RPF Series 7

RPF WORK

The RPF works segregated—one job, one place, one time, and berths in one area.

NO ONE ON THE RPF MAY BE USED FOR ANY POST OR MISSION.

The work that is done by the RPF is assigned by Estates.

Wanted is completed Estates projects of good quality, acceptably done by RPF members.

All RPF work is broken down into project targets.

The CO Estates should list extensively every area in buildings and exterior that needs handling, in exact detail, so as to make the whole area posh and viable and assign them area by area to the RPF, without at the same time letting Estates crew abandon maintenance.

The RPF were originally given the task of poshing up the ship but only allowed to clean. Cleaning can continue, but the RPF should also be allowed to contribute more.

The RPF should be engaged in putting a prettier, better cared-for base there, in addition to cleaning.

They do not do such things as fix tape recorders, etc.

The RPF is not to be given any work or actions that put them on public lines. For example, they do not act as guides for an open house or work at a PR event.

The RPF should be left to do the jobs they are supposed to do and not be pulled off onto cycles for the crew. They are not a personnel pool and it throws them off schedule.

They are not to be used as some kind of dispersed Deck Force—their work must be ONE PLACE, ONE TIME, ON ONE PROJECT.

The RPF contribution is supposed to be a clean and pretty base.

It can be made so.

L. RON HUBBARD
COMMODORE

Revision assisted by
LRH Technical Research
and Compilations

LRH:RTRC:ma

SEA ORGANIZATION

FLAG ORDER 3434RE-8

15 July 1974

All SO Orgs and Units
RPFs
Senior Quads

RPF Series 8

RPF MESSING

(Taken from ED 511 Flag, MESS SYSTEM.
Issued as a Flag Order on 8 May 1967.)

The RPF is served at the same time as other messes and is itself a constituted mess and must have a Mess President.

It may not be served bread and eggs on the plea that other food is gone.

L. RON HUBBARD
COMMODORE

LRH:af

SEA ORGANIZATION

FLAG ORDER 3434RE-9

10 March 1984

All SO Orgs and Units
RPFs
Senior Quals
Senior C/S Int Office
Inspector General Network

(This Flag Order was originally issued as FO 3863, RPF Series 16, RPF GRADUATION. Reissued 8 May 1997 to correct the FO and RPF Series numbers.)

RPF Series 9

RPF GRADUATION

Regardless of other requirements for graduation from *any* Rehabilitation Project Force of the Sea Organization, the following requirement is in effect on receipt of this FO.

No person may be graduated from the RPF without full application of the recovered technology on Sec Checking and PTS checking for nonsurvival considerations and evil purposes on all dynamics*.

Further, to ensure the expert and nonsquirrel application of the technology, the folders and final results of the action must be passed by a representative of the Office of Senior C/S Int and the Inspector General Network of RTC.

This applies regardless of the case level of the person involved.

The Rehabilitation Project Force was established to rehabilitate and rehabilitation is often not possible without the expert application of this technology.

L. RON HUBBARD
COMMODORE

LRH:ma

* For data on what "PTS checking for nonsurvival considerations and evil purposes on all dynamics" is, see HCOB 28 Feb. 84, C/S Series 118, PRETENDED PTS.

All SO Orgs and Units
RPFs
Senior Quads

(This Flag Order was earlier issued as FO 3434RD-55RA, RPF Series 19, RPF GRADUATION REQUIREMENTS. Revised to include all the LRH RPF requirements, to remove those written by others and to correct the FO number and RPF Series number. Revisions not in script.)

RPF Series 10

RPF GRADUATION REQUIREMENTS

The graduation requirements for the RPF are:

1. Can he or she make somebody better? Not get better, but make somebody else better.
2. Must learn tech and get themselves handled in co-audit and will be graduated from it only when they have released another fully.
3. Must themselves be fully cleaned up. No person may be graduated from the RPF without full application of the recovered technology on Sec Checking and PTS checking* for nonsurvival considerations and evil purposes on all dynamics.
4. Is no longer an R/Ser, low OCA, nonproducer or repeated stat crasher and overt-product maker.
5. Must have been of material help to the unit.
6. Must produce quality products instead of previous overt products. (One RPF I/C "was trying to get people through the RPF" instead of trying to get valid products.) Obviously no RPFer will make it until he can produce well and with that recovers his pride and survival potential.

L. RON HUBBARD
COMMODORE

Revision assisted by
LRH Technical Research
and Compilations

LRH:RTRC:ma

* For data on what "PTS checking for nonsurvival considerations and evil purposes on all dynamics" is, see HCOB 28 Feb. 84, C/S Series 118, PRETENDED PTS.

SEA ORGANIZATION

FLAG ORDER 3434RE-10

21 July 1974
Revised 8 May 1997

All SO Orgs and Units
RPFs
Senior Quads

(This Flag Order was earlier issued as FO 3434RD-55RA, RPF Series 19, RPF GRADUATION REQUIREMENTS. Revised to include all the LRH RPF requirements, to remove those written by others and to correct the FO number and RPF Series number. Revisions not in script.)

RPF Series 10

RPF GRADUATION REQUIREMENTS

The graduation requirements for the RPF are:

1. Can he or she make somebody better? Not get better, but make somebody else better.
2. Must learn tech and get themselves handled in co-audit and will be graduated from it only when they have released another fully.
3. Must themselves be fully cleaned up. No person may be graduated from the RPF without full application of the recovered technology on Sec Checking and PTS checking* for nonsurvival considerations and evil purposes on all dynamics.
4. Is no longer an R/Ser, low OCA, nonproducer or repeated stat crasher and overt-product maker.
5. Must have been of material help to the unit.
6. Must produce quality products instead of previous overt products. (One RPF I/C "was trying to get people through the RPF" instead of trying to get valid products.) Obviously no RPFer will make it until he can produce well and with that recovers his pride and survival potential.

L. RON HUBBARD
COMMODORE

Revision assisted by
LRH Technical Research
and Compilations

LRH:RTRC:ma

* For data on what "PTS checking for nonsurvival considerations and evil purposes on all dynamics" is, see HCOB 28 Feb. 84, C/S Series 118, PRETENDED PTS.

SEA ORGANIZATION

FLAG ORDER 3434RE-11

29 August 1978

All SO Orgs and Units
RPFs
Senior Quals

RPF Series 11

AN OMITTED STEP

(Taken from LRH despatch of 29 August 1978.
Issued as a Flag Order on 8 May 1997.)

There can be an omitted step on assignment to the RPF. This was the case in one organization which got up to near 50% on the RPF at one point. Something was wrong.

The omitted step was: Have they been destructive on post?

If an RPF is building up with high percentages of the crew assigned, it is probably because this one point was not looked into.

The error is not taking into account the individual's post stats and destructiveness.

L. RON HUBBARD
COMMODORE

Compilation assisted by
LRH Technical Research
and Compilations

LRH:RTRC:bn

SEA ORGANIZATION

FLAG ORDER 3434RE-12

26 February 1984

All SO Orgs and Units
RPFs
Senior Quals

(This Flag Order cancels and replaces FO 3434RD-30R, RPF Series 12, RPF BOARD OF REVIEW and FO 3434RD-56R, RPF Series 21, RPF GRADUATES AND REPRIEVES which both contained non-LRH data on the subject of RPF Boards of Review.)

RPF Series 12

RPF BOARD OF REVIEW

(Taken from LRH advices and issued here to provide a means for an RPF member to seek recourse of the LRH Comm or KOT per HCO PL 23 Feb. 1978R, BOARD OF REVIEW, if he feels his assignment was incorrect and should be cancelled. Issued as a Flag Order on 8 May 1997.)

Reference:

HCO PL 23 Feb. 78R
Rev. 7.5.84

LRH Comm Network Series 19
BOARD OF REVIEW

A Board of Review may be convened to handle any instances of unjust assignments to the RPF. Sometimes people ignore production records or past history or stats.

Therefore, such a board should review the person assigned to the RPF on the basis of whether or not he was actually destructive on post.

Additionally, the board examines the validity of the person's assignment based on:

- 1) Stats when put in RPF
- 2) General state of case
- 3) Progress while in the RPF
- 4) Stats while in RPF.

Findings to be done on submission of full CSW by the Board of Review for my approval.*

L. RON HUBBARD
COMMODORE

Compilation assisted by
LRH Technical Research
and Compilations

LRH:RTRC:bn:ma

* The hat of authorizing RPF Boards of Review is now worn by AVC Int RTC.

SEA ORGANIZATION

FLAG ORDER 3434RE-13

13 September 1978

All SO Orgs and Units
RPFs
Senior Quals
Treasury

(This Flag Order was issued as FO 3434RD-54, RPF Series 13, [same title]. It is hereby reissued on 8 May 1997 to delete non-LRH data and correct the FO number and the signatory.)

RPF Series 13

PAY RESTORATION FOR CANCELLED RPF ASSIGNMENTS

Those who have been incorrectly assigned to the RPF and received partial allowance are to be repaid the balance of basic SO allowance upon cancellation of their original RPF assignment.

This refers to cases of cancelled RPF assignments, not reprieves.

Effective immediately.

COMMODORE'S MESSENGER

as ordered by
L. RON HUBBARD
COMMODORE

LRH:CMSNGR:ed

SEA ORGANIZATION

FLAG ORDER 3434RE-14

20 January 1974
Revised 8 May 1997

All SO Orgs and Units
RPFs
Senior Quals
Fitness Boards

(This Flag Order was originally issued as FO 3434RD-12RA, RPF Series 7, FITNESS BOARD AND RPF. It is hereby revised to correct the title, FO and RPF Series numbers and to delete non-LRH data from it.)

RPF Series 14

HANDLING LIST ONE R/Sers

Ideally, List One R/Sers would be given a thorough Sec Check to put them in good case shape and fitness boarded.

This instruction will apply to those who are particularly destructive and/or nonconstructive.

For those who have some redeeming factors, the instruction is to RPF them.

L. RON HUBBARD
COMMODORE

LRH:ed

SEA ORGANIZATION

FLAG ORDER 3434RE-15

23 February 1978

All SO Orgs and Units
RPFs
Senior Quals

RPF Series 15

RE-EDUCATION STEP

(Taken from an LRH advice of 23 February 1978 where LRH is commenting on the posting of a List One R/Ser to an executive post. Issued as a Flag Order on 8 May 1997.)

The thing people don't realize about List One R/Sers is that when they're cleaned up you have somebody whose track training and experience is all involved with overts. He has little or no experience being a good guy. In essence, this is the same problem one would have with a cleared cannibal. A cleared cannibal is a cleared cannibal.

In this particular case, I have no doubt that his List One R/Ses are cleared up, but his education, which is to say, experienced background for billions of years, contains only chopping people up with bad TRs. He simply doesn't know how to talk to a person without invalidating him as that's the only way he knows how to talk to anybody.

The advantage is that he is now open to new training which he never was before. He would have to be put through TRs—which he never could have passed before—taught social graces such as saying please and thank you, and opening the door for somebody.

So the probability is that it is a cruelty to clean up a List One R/Ser and then not give him a full PR course, a course in grooming, etiquette and some books to read about nice guys.

The advantage is he is now not plotting one or another's demise covertly and is not fixedly preventing himself from learning anything.

One would have him read for sure and do some practical on *How to Win Friends and Influence People* by Dale Carnegie. That is the only book I know of that will do him some good.

We will decannibalize the cleared cannibal.

One could even go further with auditing and find some times, if they are there, when he was a nice guy and was successful at it.

I'm writing this so you will understand why it isn't okay to appoint an ex-L1 R/Ser.

L. RON HUBBARD
COMMODORE

Compilation assisted by
LRH Technical Research
and Compilations

LRH:RTRC:ed

SEA ORGANIZATION

FLAG ORDER 3434RE-16

29 December 1976

All SO Orgs and Units
RPFs
HCOs
Senior Quails

(This Flag Order was originally issued as FO 3434RD-39R, RPF Series 9, REQUESTS FOR DATA ON RPF MEMBERS. It has been revised to delete non-LRH data from the issue and to correct the title, FO number and RPF Series number.)

RPF Series 16

**APPROACHING RPF MEMBERS
FOR PERSONNEL POSTINGS**

(Taken from LRH advice of 29 December 1976.
Issued as a Flag Order on 8 May 1997.)

In instances where you have terminals approaching the RPF for personnel, put a chit in the ethics files of every one of these people, that they prefer downstats and R/Sers to other type of personnel, by their own evidence of not encouraging personnel pools to come into being. Therefore, that their advice on and ok of personnel appointments must not be taken and that a personnel order signed by them is invalid.

We will thus make this action of using the RPF as a personnel pool even less popular.

NO MEMBER OF THE RPF MAY HAVE ANY CONDITIONAL FUTURE POSTING ASSIGNED.

RPF graduates go back to the areas whence they came, so are *not* available for off-lines transfer from one division to another.

L. RON HUBBARD
COMMODORE

LRH:ed

SEA ORGANIZATION

FLAG ORDER 3434RE-17

1 March 1978

All SO Orgs and Units
RPFs
Senior Quals

RPF Series 17

RPF IN-CHARGE

(The text of this issue was originally written by LRH on 1 March 1978 for inclusion in FO 3434RC, THE REHABILITATION PROJECT FORCE, which was later cancelled. This data is hereby issued as an FO on 8 May 1997 to preserve it as part of the RPF Series.)

The RPF I/C must be a fully qualified staff member and may not be a member of the RPF. He is a staff member.

The post may not be double hatted.

The qualifications must include a clean ethics record, no R/Ses and no LSD. He must have a reality on tech and preferably at least some rudimentary Supervisor training. Before or after his posting he must do the investigator pack and the Ethics Officer pack as well as Volume 0 of the OEC. Some past military training is not undesirable. It must be remembered that he is dealing with R/Sers. Therefore the SP/PTS pack is desirable.

The stat of the RPF I/C is:

1) RPF checklist completions or TIP completions fully and honestly done and verified.

2) One point for every Ethics and Chaplain type action taken.

3) Number of completed Estates projects of good quality and acceptably done by RPF members.

4) Number of graduates fully verified and complete with a loss of the whole week's stats when a member or graduate falls on his head.

Whether the RPF actually gets any products or not in terms of Estates work done and in terms of salvaged staff members depends in no small part on the RPF I/C.

L. RON HUBBARD
COMMODORE

SEA ORGANIZATION

FLAG ORDER 3434RE-18

3 July 1977

All SO Orgs and Units
RPFs
Senior Quals
Treasury

(This Flag Order was issued as FO 3434RD-45RA, RPF Series 24, [same title]. It is hereby reissued on 8 May 1997 to delete non-LRH data and correct the FO and RPF Series numbers and the signatory.)

RPF Series 18

ALL RPF COURSE AND AUDITING DONATIONS

1. RPF co-auditing—no donation requested.
2. RPF review auditing by RPFers—no donation requested.
- 2A. RPF auditing by Qual—same donation as public for that org or area payable by the RPF auditor who made it necessary.
- 2B. C/Sing by an RPF C/S—no donation requested.
- 2C. Special C/Sing by a non-RPF C/S—same donation as public in that org or area.
3. Read-it, drill-it, do-it course actions done in the RPF—no donation requested.
4. Cramming if done in the RPF—no donation requested.
- 4A. Cramming if done by the org—same donation as requested from public.
5. PTS/SP Detection, Routing and Handling Checksheet—no donation requested.
6. New Era Dianetics Course done in the RPF—same donation as requested from org or area public.
7. Mini Confessional Course Checksheet done in the RPF—no donation requested.
8. RPF Basic Hat—no donation requested.
9. Cleaning Checksheet—no donation requested.
10. Retread courses (retreading any RPF-taught courses)—\$500.00.
11. Meters, books and materials—regular org donation.
12. Full cost of any material damage done.

13. All previous transport and other related expense incurred by the organization by reason of the person.

14. All previous services billings prior to the RPF.

L. RON HUBBARD
COMMODORE

LRH:jh:ed

SEA ORGANIZATION

FLAG ORDER 3434RE-19

19 January 1985

Revised 8 May 1997

All SO Orgs and Units
RPFs
Senior HCOs
Senior Quails

(This Flag Order was originally issued as FO 3875, RPF Series 23 [same title]. It is hereby revised to clarify the purpose and use of waivers for the RPF and to correct the FO and RPF Series numbers. Revisions not in script.)

RPF Series 19

WAIVERS FOR THE RPF

(Cancels and replaces FO 3875.)

Persons transferred to the RPF are only transferred with cause. They are individuals who are R/Sers, low OCA nonproducers or repeated stat crashers and overt product makers, and have caused considerable trouble for themselves and the organizations they have been involved with.

Hence, a person entering the RPF executes certain waivers to safeguard the Church against any claim or upset, should such ensue, as a first step before effecting his own redemption. These waivers make it clear that the individual is undertaking the program on his own responsibility and volition and that he holds no one else culpable for accidents or occurrences on the RPF. Transaction of the waivers as well as participation in the program are fully voluntary and anyone who does not wish to sign the forms or follow the program exactly may terminate his membership in the Sea Organization.

Thus, before the SO member can participate in the RPF in lieu of offload, he must understand the purpose and intention of the RPF as covered in RPF Flag Orders and be fully apprised of the course he will be required to follow, of his own volition, toward redemption.

Two waivers are to be signed. The first is called the ACKNOWLEDGMENT OF RPF ASSIGNMENT AND ELECTION TO PROCEED. The individual will be given this form for signature upon receipt of his assignment and before routing onto the RPF. This will be handled by the HCO of his org. No one may be admitted into the RPF who has not signed this form.

After the person has arrived in the RPF and has studied the RPF FOs, he is then given the APPLICATION FOR PARTICIPATION IN THE RPF AND GENERAL RELEASE. This document may only be signed after the person has a full understanding of what the RPF program involves and has read all of the RPF Series and attests he fully understands the series.

The Cont A/Legal Aide is responsible for verifying with local counsel that the waivers are valid under local laws. Should any changes be needed, the A/Legal Aide is to CSW these to Legal Aide OSA Int for approval prior to implementation.

SEA ORGANIZATION

FLAG ORDER 3434RE-20

23 May 1978

All SO Orgs and Units
RPFs
Senior Quads

RPF Series 20

RE: RPF PERSONAL GEAR

(Reissued from a directive written on 23 May 1978.
Issued as a Flag Order on 8 May 1997.)

When a person is assigned to the RPF, the HAS is responsible for ensuring that the person's personal gear and clothes are packed up so as not to get damaged and put in a safe place for when they graduate.

This is to ensure that their gear does not get ripped off or damaged for their duration in the RPF.

COMMODORE'S MESSENGER

for
L. RON HUBBARD
COMMODORE

LRH:CMSNGR:ed

SEA ORGANIZATION

FLAG ORDER 3434RE-20

23 May 1978

All SO Orgs and Units
RPFs
Senior Quads

RPF Series 20

RE: RPF PERSONAL GEAR

(Reissued from a directive written on 23 May 1978.
Issued as a Flag Order on 8 May 1997.)

When a person is assigned to the RPF, the HAS is responsible for ensuring that the person's personal gear and clothes are packed up so as not to get damaged and put in a safe place for when they graduate.

This is to ensure that their gear does not get ripped off or damaged for their duration in the RPF.

COMMODORE'S MESSENGER

for
L. RON HUBBARD
COMMODORE

LRH:CMSNGR:ed

SEA ORGANIZATION

FLAG ORDER 3434RE-21

19 January 1985
Revised 8 May 1997

All SO Orgs and Units
RPFs
Senior Quads

(This Flag Order was originally issued as FO 3874, RPF Series 22, RPF SUPPORT. It is hereby revised to clarify which org is responsible for the support costs of an RPF member, and to correct the FO and RPF Series numbers. Revisions not in script.)

RPF Series 21

RPF SUPPORT

The org to which the RPF member will return bears the cost of crew welfare (by which is meant pay, berthing, food and medical) and any other such expenses for that RPF member. These expenses are simply paid for out of the crew welfare sums, just as is done for any other staff member of that org.

In the case where the RPF member is no longer qualified for the org he came from and there is written authorization through normal personnel channels for him to go to another org upon completion of the RPF program, the RPF member's support would be paid by the new org.

The org for which the RPF does its work is *not* responsible for such expenses, unless of course the RPF member will be posted in that org upon graduation.

LRH TECHNICAL RESEARCH
AND COMPILATIONS

Authorized by
AVC INTERNATIONAL

for
CHURCH OF SCIENTOLOGY
INTERNATIONAL

CSI:SF:RTRC:ed

Unpublished Work: © created 1997 CSI.
All Rights Reserved.

SCIENTOLOGY, FLAG and LRH are trademarks and service marks owned by Religious Technology Center and are used with its permission. Printed in USA.

SEA ORGANIZATION

FLAG ORDER 3434RE-22

3 August 1978

All SO Orgs and Units
RPFs
Senior Quals

(This Flag Order was originally issued as FO 3434RB-53, RPF "NIGHTS OUT." In 1980 it was cancelled illegally by FO 3798. It is hereby reinstated and reissued on 8 May 1997 with a new FO number and included as part of the RPF Series.)

RPF Series 22

RPF NIGHTS OUT CANCELLED

The arrangement of RPFers having a night out* with their crew spouse is cancelled.

COMMODORE'S MESSENGER

as ordered by
L. RON HUBBARD
COMMODORE

LRH:CMSNGR:ed

* "A night out" refers to the fact that during that period in the late 1970s, some RPF members spent one night out a week with their spouse. This practice created enturbulation and distracted RPF members from their redemption programs.

SEA ORGANIZATION

FLAG ORDER 3434RE-23R

27 March 1975

Revised 2.7.98

All SO Orgs and Units
RPFs
Senior Qualls

(Revised to add a clarification to item G of
the RPF restrictions. Revisions not in script.)

RPF Series 23R

RPF—RIGHTS AND RESTRICTIONS

When an individual takes part in the RPF, he is thoroughly engaged in redeeming himself spiritually by fully handling the underlying causes of his destructive actions. As with any intensive religious endeavor toward rehabilitation, the attention of the individual must not be dispersed into other activities. *All* efforts should be expended purely on becoming a full product of the RPF.

As covered in RPF Series 19, WAIVERS FOR THE RPF, an individual must read all the RPF Series and agree to follow them before he may be allowed to start the RPF program. Undertaking the RPF program, with its attendant restrictions and disciplines, is done voluntarily. The person has the option of doing the RPF and adhering to its rules, or not accepting the opportunity for redemption and terminating his membership in the Sea Organization.

The RPF program is for the individual's rehabilitation, and the more rapidly he gets through it, the sooner he becomes a contributing member of the full group—and the group welcomes that occurrence.

With this purpose in mind, the rights and restrictions for all RPF members are enumerated here, to be complied with unreasonably.

RIGHTS

The RPF carries no privileges, as it may be sought after, but every member of the RPF has the following rights:

1. Access to standard Scientology justice procedures.
2. To have standard tech applied to him by his fellows in the RPF.
3. Five hours study/co-audit per day and seven hours actual sleep time.

Members of the RPF may not be put on a work schedule which does not allow for 5 hours of study and co-auditing and 7 hours actual sleep time to be sessionable and studentable. Anyone in or outside the RPF issuing orders which cut across the RPF program by blocking or reducing enhancement may be called before a Committee of Evidence on the charge of:

“ATTEMPTING TO UNDERMINE OR ADVISING OR ENCOURAGING OR CONDONING THE ABANDONMENT OR REDUCTION OF USE OF THE FULL TECHNOLOGY OF LOCATING AND HANDLING OVERTS, EVIL PURPOSES, DESTRUCTIVE INTENTIONS AND NONSURVIVAL CONSIDERATIONS.” — LRH (Ref: HCOB 6 June 84R IV, FPRD Series 2R, THE “LOST TECH” OF HANDLING OVERTS AND EVIL PURPOSES)

The RPF I/C or any RPF member may directly alert the Office of Senior C/S International to such a situation if it occurs and when the RPF I/C cannot or does not handle such locally.

4. Not to be used as some kind of dispersed deck force—their work must be ONE PLACE, ONE TIME, ON ONE PROJECT. (Ref: FO 3434RE-7, RPF Series 7, RPF WORK)

5. The RPF is served at the same time as other messes and is itself a constituted mess and must have a Mess President. The RPF may not be served bread and eggs on the plea that other food is gone. (Ref: FO 3434RE-8, RPF Series 8, RPF MESSING)

6. Thirty minutes hygiene time which must be used for hygiene and clean-up such as after deck work and before enhancement time.

7. Handles out-ethics in the RPF with a direct confrontation of the culprit. If this does not handle, one then writes a standard staff member report to the correct RPF terminals including the RPF I/C. If the situation is still not handled in the expected time, the RPF member can send a copy to the correct terminals outside the RPF and this report *cannot* be stopped from going out. (Refs: HCO PL 12 Oct. 82, CORRUPT ACTIVITIES; HCO PL 22 July 82, KNOWLEDGE REPORTS)

RESTRICTIONS

The following are the restrictions that apply to all members of the RPF. These restrictions define very strict channels so the individual may intensely work, study, audit and receive auditing with no outside distractions until complete on the program. Anyone using these restrictions to cause hardship to staff is subject to investigation and/or a Committee of Evidence. These restrictions must be followed exactly and constructively.

The RPF member:

- A. Enters the RPF in a condition not higher than Liability (to the Sea Org). (The exact condition is to be determined by the RPF member in conjunction with the RPF MAA or RPF twin as okayed by the RPF MAA.)
- B. Has no liberty until graduation at which time is awarded a 24-hour liberty before reporting for duty at his or her org.
- C. Is restricted to the base at all times except when on authorized work cycles in other areas or buildings or authorized medical or other urgent cycles. Any travel off the base is accompanied by another staff member (outside the RPF) or an RPF member who has MAA and Security okay. This rule is not to be used to prevent staff from handling real situations where they occur.
- D. Does not have the right to an annual leave in the Sea Org while in the RPF. Should an emergency arise, such as a death or serious illness in the family or a legal (e.g., immigration) situation, the RPF member may send a CSW on the matter to his seniors in the RPF, the RPF I/C and Security Chief. If approved, before leaving he is to receive a Security Check to ensure that he did not falsify his CSW and is not intending to blow from the program.

- E. Receives $\frac{1}{4}$ allowance while in the RPF and is not eligible for bonuses.
- F. May berth only in one area in separate RPF quarters. May not berth with the rest of crew. (An RPF berthing area must be assigned and is to be dormitory and deck style.)
- G. May not originate written or spoken communication to terminals outside the RPF, not including the RPF I/C and any of his staff. The only exceptions to this restriction are: a) replying to a communication originated to the RPF member by staff or executives, or family members; b) writing standard Knowledge Reports; c) originating communication to another in the event of an emergency, such as injury, fire, etc., or to obtain information necessary to execute authorized RPF deck projects as cleared by the RPF I/C; d) writing to non-Scientology family members as needed per standard PTS Type I handlings as worked out with the RPF MAA; e) periodically speaking on the phone with any non-staff family members, but only if required due to a real situation (as opposed to just "chatting" or "staying in comm" which is more easily done in writing by letter) providing the phone calls are done in the presence of Security staff or RPF I/C.
- H. Has rank or rating lowered two grades upon assignment to RPF.
- I. Has rank or rating suspended until graduation. (Members of the RPF would address RPF seniors, and juniors where appropriate, by post title such as "MAA" or "Bosun.") (Ref: Esto Tapes 5 and 6, 3 Mar. 72, HANDLING PERSONNEL)
- J. Is part of an RPF mess only, which is separate from the crew mess.
- K. May not attend crew parties or any crew or public events.
- L. Is denied normal canteen privileges but may use vending machines or the canteen when not in use by the crew, but only at authorized times.
- M. Takes no cigarette breaks in the RPF and doesn't smoke indoors, including berthing spaces.
- N. Wears the uniform which is approved for the RPF in that area as appropriate to Sea Org location as long as approved on authorized lines. The RPF member wears a black arm band on his right sleeve.
- O. Must move quickly and run on the decks on Sea Org bases. (This does not mean groups of RPF members run down public streets together or otherwise use this to cause out-PR. It also does not mean that in rare instances, persons with a medical situation such as an injury are forced to run. But when on the decks and on the Sea Org base, RPF members pride themselves on their quality of product and the speed in which this is accomplished.) Shuffling, half running and walking have no part in this. The RPF must be snap-and-pop in all of its actions (which includes running) and it is the responsibility of each RPF member as well as the RPF I/C to see that this occurs.
- P. May not enter staff or public areas, except when necessary for assigned cleaning or work duties in those areas, under a section leader.
- Q. May not use any crew or public recreational facilities at any time.

- R. Must suffer additional time in RPF for violations of regulations, failure to produce, overt products, refusal to come clean or any other offense, if assigned by a duly convened and approved court or Comm Ev of fellow RPF members. The Comm Ev may be convened by the RPF MAA or by the RPF I/C. Any recommendations must be okayed by the RPF I/C. Where the recommendation calls for additional time of more than one month, the Comm Ev must have AVC okay.
- S. Must do his own laundry (or as arranged within the RPF).
- T. May not use public or crew bath or restroom facilities and may only use bath or restroom facilities as designated by CO Estates but which must be hygienic, clean and operational.
- U. May not consume any alcoholic beverages or drugs except for medicine and as okayed by the Medical Liaison Officer and the RPF C/S or, of course, a medical doctor.
- V. May not have with him in the RPF any radios, TV, taped music, musical instruments, magazines, novels, games, cameras or any entertainment or luxury items, in order to prevent any distractions from the intense study and work program. This does not include Scientology publications.
- W. May not drive vehicles or operate heavy equipment.
- X. Remains with the RPF apart from the crew. It is an essential part of the program that the RPF be segregated from the crew so that the crew is not enturbulated and can keep the show on the road. Equally important, the RPF member must concentrate on getting through his program without distraction. This extends, out of necessity, to the second dynamic as well. RPF members must berth only in the assigned RPF berthing. This is a practice in many religions which restrict 2D activities (including celibacy) in order to bring about a concentrated dedication to spiritual matters. In the case of a member of the RPF, this restriction covers any direct personal contact with spouse or other family members, all of which is prohibited until the individual completes the program. As covered in point G above, the RPF member can reply to a communication originated to him from family members.

THE ABOVE RIGHTS, RESTRICTIONS AND RULES ARE TO BE ENFORCED BY THE RPF I/C, BOSUN AND MAA.

LRH TECHNICAL RESEARCH
AND COMPILATIONS

Authorized by
AVC INTERNATIONAL

for
CHURCH OF SCIENTOLOGY
INTERNATIONAL

CSI:GW:RTRC:jh:bn:ma.dc

Grateful acknowledgment is made to L. Ron Hubbard Library for permission to reproduce selections from the copyrighted works of L. Ron Hubbard. SCIENTOLOGY, HCO, FLAG, LRH and STANDARD TECH are trademarks and service marks owned by Religious Technology Center and are used with its permission. Services relating to Scientology religious philosophy are delivered throughout the world exclusively by licensees of the Church of Scientology with the permission of Religious Technology Center, holder of the SCIENTOLOGY and DIANETICS trademarks. Printed in USA

18 August 1976
Revised 8 May 1997All SO Orgs and Units
RPFs
Senior Quails

(This Flag Order was issued as FO 3434RD-34RA, RPF Series 8, RPF ROCKS AND SHOALS. It is hereby revised to update the issue so it is applicable to all RPFs. Revisions not in script.)

*RPF Series 24***RPF ROCKS AND SHOALS**

“In most sea organizations a list of penalties is called ‘rocks and shoals’ and is read out to the crew at muster.” —LRH, Flag Order 87R

Having a system of penance, or making up for a wrong that was done, has long been a hallmark of religions. While we do not believe in any form of flagellation (priests flogging themselves or others with whips) or similar infliction of pain or duress, members of the RPF have found the simple use of running laps around their work site, or doing push-ups or sit-ups, to be an easy and effective means of maintaining discipline. This is their system of “rocks and shoals.”

The first rocks and shoals were drawn up by the Flag RPF MAA in 1976. These provided an on-the-spot means to correct someone on the decks, get them out of any temporary dejection and get them right back onto doing what they were doing.

Over the years these rocks and shoals have proven quite workable. The RPF rocks and shoals do not replace standard ethics. But they do provide a fast means to get someone to end cycle on an error, goof or overt product on the decks and get on with it. Repeating or continuous errors, major overt products, signs of PTSness, or other indicators would be handled with standard OEC Volume 1 ethics tech.

Rocks and shoals were not intended to be, nor have they been used as, punishment over the years. Even though they require physical exertion they were never meant to cause pain or duress and in fact they don't.

The original definitions and descriptions of the laps taken as part of the rocks and shoals were associated specifically with the physical spaces at Flag in 1976. However, with RPFs in different locations around the globe, definitions are needed which apply to all areas.

The purpose of this issue is to give definitions and guidelines for these rocks and shoals which apply to all RPFs, yet retain the exact workability of the original list.

The following definitions give approximate lengths of laps. These lengths are to be applied to the physical locations where the RPF is working that day, as this will not only vary from RPF to RPF but within the RPF itself depending on the site of work for the day.

The RPF Bosun or MAA would lay out the exact physical landmarks which delineate these routes. The lengths of the laps must approximate the below definitions.

DEFINITIONS

ONE LAP: This is about 1/8th of a mile (660 feet) in length and is run in a circular route.

ONE LONG LAP: This is between 1/8th and 1/4th of a mile (between 660 feet and 1320 feet) and is run in a circular route.

ONE BIG LAP: This is about 1/4th of a mile (1320 feet) and is run in a circular route.

THE ROCKS AND SHOALS

1. NONCOMPLIANCE (such as with a TM or a production cycle): 1 long lap
2. NO REPORT: 1 long lap
3. FALSE REPORT: 1 big lap
4. MOVING SLOWLY, WALKING INSTEAD OF RUNNING (RUNNING IN PUBLIC AREAS WHERE THERE IS DANGER OF OFFENDING OR RUNNING INTO CREW OR PUBLIC SHOULD NOT BE DONE): 1 lap
5. DEV-T: 1 lap
6. USING ELEVATORS INSTEAD OF STAIRS (EXCEPT WHEN CARRYING LARGE LOADS OFF PUBLIC LINES): 1 lap
7. BACKFLASH: 1 lap
8. OUT-ETIQUETTE: 1 big lap
9. OVERT PRODUCT: 1 long lap
10. OVERT PRODUCT NOT CORRECTED (DESPITE ORDERS TO DO SO): 2 big laps
11. ENTERING CREW AREA WITHOUT PERMISSION: 1 long lap
12. OUT-HYGIENE: 1 lap
13. OUT OF UNIFORM: 1 lap
14. LATENESS: 1 long lap
15. BREAKAGE: 1 long lap (as well as paying for any damage)

NOTE: Minor corrections on the spot can be done with ten or more push-ups or sit-ups right then and there and back to work. Anything which fits into the categories above are handled with laps.

Laps assigned are taken immediately, and compliance is reported to the senior assigning the lap before the work cycle is resumed.

WHO CAN ASSIGN

Only seniors on the command line may assign laps. When an RPFer is on enhancement, laps are not assigned. Standard study and ethics tech are used in the course room.

If a senior has to bypass command levels on the org board and assign laps to someone more than one level below him, those bypassed get the same penalty. Any person has the right to query a lap assignment with the senior or with the MAA or his deputies if he feels it is unjust. But if he is found to be falsely protesting or reporting to avoid a correct action, double penalty will be levied.

Improper use of rocks and shoals will result in a big lap for the offender for the first occurrence. If repeated, a Court of Ethics will be called on the charge of MISCONDUCT which is a misdemeanor per HCO PL 7 Mar. 65RA III, OFFENSES AND PENALTIES.

These rocks and shoals may not be used inhumanely or suppressively such as by assigning an excessive amount of laps or otherwise levying penalties beyond the guidelines listed in this issue. Such gross misapplication of rocks and shoals reclassifies the above charge as a crime, and will result in a Committee of Evidence on the offender. (Ref: HCO PL 7 Mar. 65RA III, OFFENSES AND PENALTIES)

Rocks and shoals correctly used provide a means to instantly get an RPFer out of any temporary lapse or overt product committed and right back to what he was doing. In this way he can end cycle and get on with completing cycles of action and thus increase his production.

And that is the use of rocks and shoals.

LRH TECHNICAL RESEARCH
AND COMPILATIONS

Authorized by
AVC INTERNATIONAL

for
CHURCH OF SCIENTOLOGY
INTERNATIONAL

CSI:SF:RTRC:jh.ed

Grateful acknowledgment is made to L. Ron Hubbard Library for permission to reproduce selections from the copyrighted works of L. Ron Hubbard. LRH, SCIENTOLOGY, FLAG, OEC, HCO and L. RON HUBBARD are trademarks and service marks owned by the Religious Technology Center and are used with its permission. Printed in USA.

SEA ORGANIZATION

FLAG ORDER 3434RE-25

7 January 1974

Revised 8 May 1997

All SO Orgs and Units
RPFs
Senior Quals

(This Flag Order was originally issued as FO 3434RD-1RA, RPF Series 2, RPF ORGANIZATION. It has been revised to delete arbitraries, align it to LRH data on the composition of RPFs and correct the FO and RPF Series number and the signatory. Revisions not in script.)

RPF Series 25

RPF ORGANIZATION

The RPF is organized around getting all such persons contributing through supervised Estates projects on a one-job, one-place, one-time basis, as well as getting through a technical program five hours per day. It is established under the Senior Qual of the continent, directly under the RPF I/C, in the Senior Correction Section.

The basic org board for the RPF is composed of two sections: The Decks Section, which executes the Estates projects, and the Tech Section, which supervises RPF study and co-auditing.

A copy of this basic RPF org board is attached to this issue.

Depending on the size of the RPF, the complements for the various units in the RPF may vary. Where it is found that assistants, deputies and other Tech posts are needed, they are to be added in accordance with HCO PL 8 Nov. 71R II, COMPLEMENT and HCO PL 28 Feb. 66, DANGER CONDITION DATA, WHY ORGANIZATIONS STAY SMALL. This does not mean an RPF becomes posted as an org would with Estos, Org Officers, etc. It does mean that where warranted, assistants and deputies may be single-hatted or added to the org board posts to handle increased load.

RPF I/C

The RPF is under the RPF I/C. He is not a member of the RPF but is posted outside of it in the Senior Correction Section of Senior Qual. He *must* be single-hatted.

The RPF I/C is fully responsible for the RPF as a unit. All communication into or out of the RPF goes through the RPF I/C.

The duties of the RPF I/C are:

1. To ensure the RPF is operating on projects as a team and is not acting as some kind of dispersed deck force.
2. To serve as a stable terminal outside of the RPF.

3. To act as the liaison for all comm from the RPF to any terminal outside the RPF and for all comm from outside the RPF into it.
4. To be responsible for the technical quality in the RPF, in liaison with the Cont Senior C/S who also has this responsibility.

The RPF I/C also has very specific responsibilities for seeing that standard ethics is applied in the RPF to assure full redemption does occur. Therefore, in addition to his other post actions, he is also responsible for seeing that the following is done:

- a. The RPF I/C must approve any and all justice actions taken within the RPF and see that they are fully on-policy.
- b. The RPF I/C must personally see and approve all conditions assignments and where any off-policy action is found it must be handled.
- c. Daily, the RPF I/C must do a complete inspection of the RPF and in doing so detect and handle any out-ethics or policy or FO violations.

The hours of the RPF I/C must be made known to the RPF unit and are not to be changed without prior notice.

DEPUTY RPF I/C FOR TECH

The RPF I/C also has a Deputy RPF I/C for Tech under him who sees to the standard application of tech in the RPF. He is posted from personnel outside the RPF.

The fact that there is a Deputy RPF I/C for Tech does not change the stable datum that members of the RPF are to get each other through by co-auditing. He is there to see to it that this co-auditing is done thoroughly and is technically correct, so that each of the persons in the RPF achieves the full gains available from the program.

Here are his technical supervisory duties:

- a. He does frequent inspections of co-audit sessions, both in the co-audit course room and via video tapes of sessions turned in by RPF co-auditors. This is not an attempt to make the co-auditors attain professional auditor standards, but rather to spot any points of out-tech, such as missing E-Meter reads on False Purpose Rundown auditing questions, which, if not handled according to standard technical procedure, could result in the co-audit team not getting the full results attainable from the rehabilitation program.
- b. The Deputy RPF I/C for Tech handles errors made by RPF members by issuing cramming orders, including retreads and retrains of the read-it, drill-it, do-it checksheets, where warranted. He sees that these do get done, so that they understand the technical materials that apply to the RPF auditing program.
- c. The Deputy RPF I/C for Tech also does *routine* checks on RPFers' auditing, by putting individual RPF members on the meter and checking for any mutual out-rudiments in RPF co-audits, and handling whatever

mutual out-rudiments there are. (Ref: HCOB 17 Feb. 74, C/S Series 91, MUTUAL OUT-RUDS)

- d. The Deputy RPF I/C for Tech routinely inspects the RPF technical lines, including course rooms, word clearing and cramming, as well as MAA applications of ethics tech, and sees that these are properly set up per HCO PLs and HCOBs and the RPF Series Flag Orders.
- e. The Deputy RPF I/C for Tech holds daily meetings with all the RPF co-auditors, i.e., as auditors, and takes up any common points of out-tech or situations affecting the RPF as a whole.
- f. The Deputy RPF I/C for Tech has the authority to order and/or do any technical correction needed, change any co-audit or take any other action per standard tech to uphold correct application of the tech in the RPF. Where warranted, the Deputy RPF I/C for Tech can and should personally execute a review action on an RPF member where a case is bogged and in need of expert auditor handling to get the RPF member moving again on his program.

The RPF I/C and the Deputy RPF I/C for Tech are fully charged with the responsibilities as laid out above and as covered in HCO PLs, Flag Orders and HCO Bulletins.

RPF BOSUN

The RPF itself is headed by a Bosun, a member of the RPF.

He is responsible for maintaining the rigorous schedule of the RPF, for seeing that productive work occurs, for group coordination and for creating an "esprit de corps" in the RPF. Persons assigned to the RPF are expected to work hard at their tasks—contribution exchanged for the rehabilitation services they receive.

He is the product officer that runs the RPF and he functions in accordance with FO 3784R, PRODUCTION SUPERVISOR.

He does not "try to get people through the RPF." He gets them to produce. He makes them get valid products. The only way that anyone can graduate from the RPF is for them to produce products they feel proud of.

The RPF Bosun is appointed by the RPF I/C. The person so appointed must have a good production record on the decks, be moving well on his enhancement program and have proven that he can keep his own ethics in.

RPF MAA

The RPF MAA is responsible for the ethics of the RPF as a unit. He handles all MAA functions and ethics matters directly, quickly and standardly, exactly as covered in LRH policy on ethics.

The duties of the RPF MAA also include mustering the RPF, enforcing schedules, keeping the stats for the RPF, keeping the ethics files for the RPF and removing ethics blocks preventing tech from going in. He may have a deputy, in a

large RPF, to assist him and as well to cover for him while he is on his enhancement time.

DEPUTY BOSUN FOR DECKS

The Deputy Bosun for Decks is the senior of the Decks Unit. He is responsible for overseeing the Section I/Cs on the decks and ensuring that they and their juniors are producing valuable *exchangeable* products which they can be proud of.

RPF SECTIONS

The RPF sections are made up of an I/C and five units, each of which contain five members. Each section is identified by a letter (i.e., Section A, Section B, etc.). If at any time the number of sections exceeds five, deputies are to be appointed under the Deputy Bosun for Decks to assist him in running these sections so that he does not have more than five juniors. This is in keeping with HCO PL 28 June 66, DANGER CONDITION DATA, WHY ORGANIZATIONS STAY SMALL.

The Section I/Cs are responsible for the production, ethics, on-the-job-training, mustering, berthing, messing, appearance, personal hygiene, etiquette, discipline, morale and behavior of the members in their own sections.

RPF TECH UNIT

The RPF Tech Unit is responsible for the training and processing within the RPF.

The personnel within the Tech Unit are in-ethics RPF members who are well along on their own programs.

The Tech Unit has its own space which is separate from any other org study or work area, where the RPF members can do their study and auditing. It must have all the checksheets, materials, supplies and equipment for its own purposes. The org that the RPF is organized under must ensure that such a space and supplies are provided for it.

The schedule for the Tech Unit must include enough time (but just enough) to do admin and prepare for the study and co-audit period. (Ref: HCOB 25 Aug. 71, C/S Series 56, HOW TO GET RESULTS IN AN HGC) It must also include three hours of deck work at the very least.

Appointments made to the Tech Unit must be approved by the RPF Bosun and the Deputy RPF I/C for Tech, or in his absence, the RPF I/C.

An RPF member who was ordered off all technical lines prior to being sent to the RPF may *not* be posted in the RPF Tech Unit.

DEPUTY BOSUN FOR TECH

The Deputy Bosun for Tech is in charge of the Tech Unit.

He is responsible for running the Tech Unit and ensuring that the RPF members are standardly gotten through their technical programs so they can be fully rehabilitated and become constructive, contributing members of the Sea Org.

He oversees the technical quality of the supervision and co-auditing in the Tech Unit, and has an Examination and Correction Section in his unit which he uses to ensure technical quality and correct any flubbing RPF member.

RPF SUPERVISORS

The RPF Training Supervisors are responsible for getting the RPF members through their studies on a read-it, drill-it, do-it basis.

The RPF Co-audit Supervisor must be trained on any auditing actions he is supervising, so that he can step in and handle any situations that may arise that the auditor is unable to handle. (Ref: HCOB 31 May 80RA, STAFF CO-AUDITS)

RPF CO-AUDIT C/S

The RPF Co-audit C/S is responsible for C/Sing all the RPF co-audit sessions. His duties and functions are fully described in the Co-audit Series and HCOBs on C/Sing.

Where warranted (such as in a large RPF), the C/S may have a Folder Page so as to speed the line for folders from the C/S to the co-audit teams.

RPF EXAMINATION AND CORRECTION SECTION

The RPF Examination and Correction Section is responsible for the examination and correction functions of the RPF. The terminal in charge of this section is the RPF Examination and Correction I/C.

There are three hats in the RPF Examination and Correction Section: Examiner, Cramming Officer and MLO. The full functions and duties of these three posts are covered in policies in OEC Volume 5 and should be looked up and studied by the RPF members holding them.

In a small RPF, the Examination and Correction I/C would hold one or more of these posts from above. The posts would be single-hatted as needed, depending on the size of the RPF.

SENIOR C/S

The Cont Senior C/S is responsible for the quality of all technical delivery in his cont, which includes the auditing and study of the RPF. (At Flag where there is no Cont Senior C/S, the D/Senior C/S Crew FSO is the Senior C/S over the RPF. At the FLO, Senior C/S ITO is over the RPF.)

The Senior C/S is responsible for the tech in the RPF being standard. His basic duties in this regard are the same as any Senior C/S as given in HCO PL 26 Sept. 74RA, NEW CASE SUPERVISOR POSTINGS.

SUMMARY

With a properly organized RPF, applying Ethics, Tech and Admin by the book, those in need of rehabilitation can take the opportunity to once again become contributing staff.

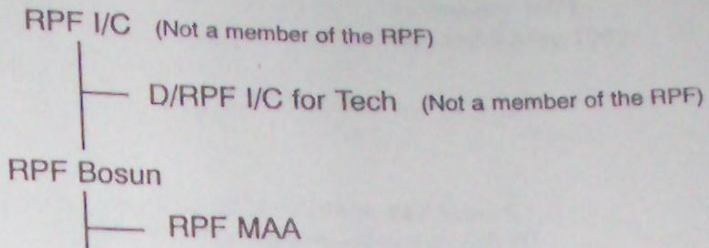
**LRH TECHNICAL RESEARCH
AND COMPILATIONS**

Authorized by
AVC INTERNATIONAL

for
**CHURCH OF SCIENTOLOGY
INTERNATIONAL**

CSE-SF-RTRC.ed

Grateful acknowledgment is made to L. Ron Hubbard Library for permission to reproduce selections from the copyrighted works of L. Ron Hubbard. SCIENTOLOGY, IICO, FALSE PURPOSE RUNDOWN, FLAG, OEC, E-METER, LRH and STANDARD TECH are trademarks and service marks owned by Religious Technology Center and are used with its permission. Printed in USA.



DECKS UNIT D/BOSUN FOR DECKS	TECH UNIT D/BOSUN FOR TECH
<p><u>RPF SECTION A</u> RPF SECTION A I/C</p> <p>RPF UNIT A-1 RPF UNIT A-1 I/C</p> <p>RPF UNIT A-2 RPF UNIT A-2 I/C</p> <p>RPF UNIT A-3 RPF UNIT A-3 I/C</p> <p>RPF UNIT A-4 RPF UNIT A-4 I/C</p> <p>RPF UNIT A-5 RPF UNIT A-5 I/C</p> <p><u>RPF SECTION B</u> RPF SECTION B I/C</p> <p>RPF UNIT B-1 RPF UNIT B-1 I/C</p> <p>RPF UNIT B-2 RPF UNIT B-2 I/C</p> <p>RPF UNIT B-3 RPF UNIT B-3 I/C</p> <p>RPF UNIT B-4 RPF UNIT B-4 I/C</p> <p>RPF UNIT B-5 RPF UNIT B-5 I/C</p> <p>(SECTION C, D, E, etc., as appropriate to the size of the RPF)</p>	<p><u>RPF TRAINING SECTION</u> CHF RPF TRAINING SUPERVISOR</p> <p>RPF TRAINING SUPERVISORS</p> <p><u>RPF CO-AUDIT SECTION</u> CHF RPF CO-AUDIT SUPERVISOR</p> <p>RPF CO-AUDIT SUPERVISORS</p> <p><u>RPF CO-AUDIT C/S SECTION</u> RPF CO-AUDIT C/S</p> <p><u>RPF EXAMINATION AND CORRECTION SECTION</u> RPF EXAMINATION AND CORRECTION I/C</p> <p>RPF EXAMINER</p> <p>RPF CRAMMING OFFICER</p> <p>RPF MLO</p>
<p>VFP: FULLY REHABILITATED SEA ORG MEMBERS WHO CAN AND WILL BE PRODUCTIVE, CONTRIBUTING STAFF MEMBERS.</p>	

SEA ORGANIZATION

FLAG ORDER 3434RE-26

12 January 1977
Revised 8 May 1997

All SO Orgs and Units
RPFs
Estates
Senior Quads

(This Flag Order was originally issued as FO 3434RD-41R, RPF Series 6, RPF PRODUCTS AND STATISTICS. It has been revised to align with FO 3434RE-25, RPF Series 25, RPF ORGANIZATION and to correct the FO and RPF Series numbers and signatory. Revisions not in script.)

RPF Series 26

RPF PRODUCT AND STATISTICS

The VFP for the RPF and statistics for the major RPF posts are hereby issued, so that the production of the RPF can be properly measured.

The Valuable Final Product of the RPF is:

FULLY REHABILITATED SEA ORG MEMBERS WHO CAN AND WILL BE PRODUCTIVE, CONTRIBUTING STAFF MEMBERS.

RPF I/C

As per FO 3434RE-17, RPF IN-CHARGE, the statistic of the RPF I/C is:

1. RPF checklist completions or TIP completions fully and honestly done and verified.
2. One point for every Ethics and Chaplain-type action taken.
3. Number of completed Estates projects of good quality and acceptably done by RPF members.
4. Number of graduates fully verified and complete with a loss of the whole week's stats when a member or graduate falls on his head.

Deputy RPF I/C for Tech

The statistics of the Deputy RPF I/C for Tech are:

1. RPF checklist completions or TIP completions fully and honestly done and verified.
2. Number of out-tech situations found versus number of out-tech situations handled.

Any out-tech situation found in the RPF counts as 1 point on the "found" part of this stat.

When each out-tech situation found is fully and terminatedly handled by the D/RPF I/C for Tech per his duties as covered in FO 3434RE-25, RPF ORGANIZATION, one point is counted on the handled part of this stat.

RPF Bosun

The statistics of the RPF Bosun are:

1. Number of completed Estates projects of good quality and acceptably done by RPF members.
2. RPF checklist completions or TIP completions fully and honestly done and verified.

RPF MAA

The RPF MAA's stat is:

Percentage of individuals in Normal or above in *both* work and in study/co-audit.

Deputy Bosun for Decks

The Deputy Bosun for Decks' stat is:

Number of completed Estates projects of good quality and acceptably done by RPF members.

Section I/C

The Section I/C's stats are:

1. Number of completed Estates projects of good quality and acceptably done by his section.
2. Number of project targets done by his section minus any targets that had to be redone or corrected because they were not done right the first time.

Section Member

The section member's stats are:

1. Number of completed Estates projects of good quality and acceptably done that he helped get done.
2. Number of project targets done minus any targets that had to be redone or corrected because they were not done right the first time.

Deputy Bosun for Tech

The stats of the Deputy Bosun for Tech are:

1. RPF checklist completions or TIP completions fully and honestly done and verified.
2. Co-audit Well Done Auditing Hours.

RPF Examination and Correction I/C

The stat of the RPF Examination and Correction I/C is:

Total number of certs and awards issued.

The stats of other personnel in the Tech Unit, such as Supervisors and C/Ses, are the same as those for comparable posts in an org.

LRH TECHNICAL RESEARCH
AND COMPILATIONS

Authorized by
AVC INTERNATIONAL

for
CHURCH OF SCIENTOLOGY
INTERNATIONAL

CSL:SF:RTRC:ed

SEA ORGANIZATION

FLAG ORDER 3434RE-27R

ALL SO ORGS AND UNITS
RPFs
SENIOR QUALS

8 May 1997
Rev. 8 May 2003

For Pilot Only

(Cancels and replaces FO 3434RE-27, RPF Series 27,
THE RPF TECHNICAL PROGRAM.)

RPF Series 27R

THE RPF TECHNICAL PROGRAM

References:

HCOB 20 June 71

C/S Series 47

FO 3434RE-2

THE SUPREME TEST OF A C/S

RPF Series 2

RPF TARGET

This is the Rehabilitation Project Force Technical Program. It has been written in strict accordance with the LRH references on tech handlings for the RPF.

The RPF provides the means by which those who have been destructive on post can fully redeem themselves, thus regain their self-esteem as productive and contributing Sea Org members. This technical program has been compiled to facilitate exactly that.

Upon transfer to the RPF, one handles at once any ethics or PTS conditions and then his program is directed toward co-auditing where he receives a full cleanup of overts, withholds and evil purposes which underlie such poor conduct, all to be done while the person contributes on deck work so as not to go further out-exchange with the group.

Each person in the RPF is programmed strictly against this issue and in full alignment with the C/S Series.

The steps of this technical program are also laid out in a checklist attached to this issue. This checklist is placed in front of the RPF member's case folder so that the co-auditor and C/S can sign off and attest that each step has been completed.

The RPF member's training is programmed against the basic lineup of actions listed below under "AUDITING." This consists of getting through his conditions and then rapidly studying and drilling what he is going to audit, on a "read it, drill it, do it" basis. The RPF member does the specific "read it, do it, drill it" for the immediate auditing actions that his twin is to receive, and then audits his twin on that.

For further auditing actions required by the RPF member's twin, the RPF member would train on the corresponding "read it, drill it, do it" for that action.

Such training allows RPF members to rapidly co-audit their way to redemption.

ETHICS

0. INTRODUCTORY STEP

As the first step upon entering the RPF, the person reads all RPF Series Flag Orders to gain a full understanding of the purpose, rules and regulations of the RPF program. He then executes certain waivers to attest that he wants to do the RPF program, understands the discipline required and is participating on his own volition.

1. CONDITIONAL: PTS HANDLING

If PTS, the situation gets fully handled. This is to be done exactly per HCOB 31 Dec 1978RB II, OUTLINE OF PTS HANDLING. The person is not to be put on any study actions or auditing actions other than those which handle PTSness, until such time as the PTS situation is handled.

2. ETHICS CONDITIONS

Ethics conditions are done up to Liability in relation to the overall activity from which the person was assigned to the RPF. The RPF member should work through these conditions, studying any applicable ethics references as needed in order to achieve a full result. While in the RPF, he would of course apply the full array of conditions formulas based on his stats and production. (Ref: HCO PL 12 July 1980R, THE BASICS OF ETHICS)

AUDITING

1. CONDITIONAL: AUDITED PTS HANDLINGS

If PTS, any audited actions needed to handle PTSness must be done. (To be determined by the C/S.)

This step is vital and must not be skipped or glossed over on any RPF member. (Ref: HCOB 31 Dec 1978RB II, OUTLINE OF PTS HANDLING) Note: A case which needs a full PTS Rundown is programmed according to HCOB 9 Dec 1971RE, PTS RUNDOWN, AUDITED.

2. CONDITIONAL: DRUG HANDLING

For those with a heavy drug history, it may be necessary to run or flatten a drug handling action before proceeding with the False Purpose Rundown. Drugs impair a person's ability to confront his case, and persons who have been on drugs do not make case gain until the drugs are handled. (To be determined by the C/S.) (Refs: HCOB 31 March 1981R, "HEAVY DRUG HISTORY" DEFINED and HCOB 11 June 1984, C/Sing THE FALSE PURPOSE RUNDOWN)

3. FALSE PURPOSE RUNDOWN AUDITING

A) C/S PREPARED FPRD FORM ON THE SUBJECT OR AREA OF THE PERSON'S ASSIGNMENT TO THE RPF OR THE APPLICABLE FPRD FORM.

Includes direct evil purpose questions as well as overt questions to address the reason the person was RPFed.

For example, a Sea Org member who was assigned to the RPF for destructive actions as a cook is to be programmed to receive an FPRD form written expressly to address that area.

B) CONDITIONAL: TRUTH RUNDOWN

If it is found that the RPF member has any involvement in spreading black PR, he receives the Truth Rundown.

The Truth Rundown utilizes the precise technology of the False Purpose Rundown to get the underlying causes of why individuals originate or pick up and spread black PR. It is invaluable in handling individuals who have spread destructive black PR—and those who themselves originated the black PR—about their own group or its leaders, activities, products or purposes.

Any and all points of black PR that were reportedly originated or spread by the individual are taken up and run. The Truth Rundown Confessional is also done, as needed, per its instructions. (Ref: HCOB 13 Oct 91R I, Truth Rundown Series 1R, THE TRUTH RUNDOWN)

C) FIRST DYNAMIC FPRD

D) SECOND DYNAMIC FPRD

E) THIRD DYNAMIC FPRD

F) FOURTH DYNAMIC FPRD

G) FIFTH DYNAMIC FPRD

H) SIXTH DYNAMIC FPRD

I) SEVENTH DYNAMIC FPRD

J) EIGHTH DYNAMIC FPRD

K) CONDITIONAL: IF NEEDED, ADDITIONAL FORMS OR TAILORED SEC CHECK QUESTIONS TO ACHIEVE THE FULL EP OF THE RPF PROGRAM.

The FPRD Basic Form is not directed for use on the RPF program as it does not cover a specific dynamic but is a general form.

4. CONDITIONAL: EXPANDED DIANETICS

Full use of Expanded Dianetics is required if the RPF member is below Clear, is R/Sing and is dramatizing the R/Ses.

This means:

Setups—per HCOB 23 April 1974RA, EXPANDED DIANETICS REQUISITES,

OCA left-hand side handling,

OCA right-hand side handling.

In other words,

“...a thorough, workmanlike handling of the pc's aberrations and contrasurvival intentions, in all aspects of life and livingness, that truly accomplishes changes for the better in the behavior, outlook, social presence and conduct of the preclear.”—LRH (Ref: HCOB 1 May 1991 XIX, Expanded Dianetics Series 39, C/Sing AND PROGRAMING EXPANDED DIANETICS)

5. CONDITIONAL: Audited NOTs R/S handling

“If a pre-OT staff member is R/Sing and dramatizing the R/Ses and has therefore been put on an RPF, he is required to receive full handling per the special NED Rundown for OTs before graduating that RPF. If he is Clear but not yet OT III, he is to get up to and through OT III as fast as possible so he can receive this special rundown.”—LRH (Ref: HCOB 13 Sept 78 II, CLEARS, OTs AND R/Ses)

6. RPF FINAL ASSESSMENT

With all previous steps of the RPF technical program completed, a final assessment is done to ensure nothing was missed.

The assessment is issued in a separate directive to RPFs. Any reads are taken up and handled at once and the list is reassessed until there are no reads.

This assessment is to be recorded on videotape clearly showing the meter and pc and is sent with the RPF member's graduation CSW.

7. CONDITIONAL: RE-EDUCATION STEP FOR LIST ONE R/Sers

FO 3434RE-15, RPF Series 15, RE-EDUCATION STEP gives an additional handling for persons coming out of the RPF who were List One R/Sers:

- a. A TRs course, such as the Success Through Communication Course
- b. A full PR course, such as the PR Series Course
- c. The Personal Grooming Course
- d. The Sea Org Etiquette Course
- e. Read the book *How to Win Friends and Influence People* by Dale Carnegie, and do practical exercises on this.
- f. Auditing on times he was a nice guy and was successful at it, as follows: “Recall a time you were a nice guy and were successful at it.” To F/N, cognition, VGIs, release.

COMPLETING LIABILITY

It is vital that an RPF member fully completes the formula for the condition of Liability. The work one does in the RPF, such as on the decks, is his production in exchange for what he receives by way of the delivery of the RPF technical program, his food, lodging, etc. It does not complete step 3 of the Liability formula with the org or group he was in prior to the RPF. Therefore, once the RPFer has successfully completed all technical and deck production requirements in the RPF and steps 1 and 2 of the Liability formula, and has received approval to graduate, he is to report to Department 3 of his org where he is to complete his Liability formula.

Only when upgraded to Non-Existence is he a full graduate of the RPF and eligible for posting, full allowance and regular crew study time. By the time the RPF graduate has completed his Liability formula in full, HCO is to already have a posting order approved so there is no delay in being routed onto post as a crew member in a condition of Non-Existence.

C/S RESPONSIBILITIES

No attempt has been made here to list any vital repair actions needed by a case to do the steps of this technical program, as these are fully covered in the C/S Series HCOBs and in the course materials for Class V Graduate Auditor and C/S.

The stress is on getting each RPF member through these basic steps as listed in this issue rapidly and thoroughly, and not off onto other actions such as "he must complete the course he was in the middle of when he was assigned to the RPF."

Although the steps in this technical program are generally done in the order listed above, it may not be used to robotically program the order in which the technical program steps are done on a case. For instance, an RPF member who has both a PTS situation and a very serious situation of unhandled drugs might require a different sequence of the steps of this program than a PTS RPF member who already has his drugs fully handled. The C/S Series must be followed in all cases.

The RPF C/S must bear in mind the purpose of the RPF, and *not order unnecessary rundowns or major actions or repairs*. One programs an RPF member's case against this technical program and follows HCOB 20 June 1971, C/S Series 47, THE SUPREME TEST OF A C/S.

"The Supreme Test of an auditor or a C/S is to make auditing go right—by the book."—LRH

SNR C/S INTERNATIONAL

Authorized by
AVC INTERNATIONAL

for
CHURCH OF SCIENTOLOGY
INTERNATIONAL

CSI:FT:RM:ab

SEA ORGANIZATION

FLAG ORDER 3434RE-28

21 February 1977
Revised 19 January 1985

All SO Orgs and Units
RPFs
Senior Quals

(This Flag Order was issued as FO 3434RD-43RA, RPF Series 10, [same title]. It is hereby reissued on 8 May 1997 to add further LRH data to the issue and to correct the FO and RPF Series numbers and the signatory section.)

RPF Series 28

**RPF
MATCHING CASES
WITH PC AND AUDITING TEAMS**

References:

HCO PL 14 Oct. 68RA THE AUDITOR'S CODE
Rev. 19.6.80
HCOB 23 July 69 AUDITOR ASSIGNMENT POLICIES

With the purpose of containing any out-tech caused by List One R/Sers auditing in the RPF, LRH laid down the following rule:

"LIST 1s AUDIT LIST 1s AND MAY NOT AUDIT ANYONE ELSE (REFERENCE PHOENIX LECTURES 1954/55 MATCHING CASES WITH PC AND AUDITING TEAMS)." —LRH

However, it has been found that occasionally an RPFer turns on List One R/Ses in the course of the RPF program. To avoid frequent changes in RPF co-audit teams an exception to the rule above is made: If one member of a non-List One R/S co-audit team turns on a List One R/S in the course of an RPF co-audit, the team may continue to co-audit if it is determined by the Snr C/S for the RPF that they are an operating co-audit team and that their progress on the RPF co-auditing program is satisfactory (and only for as long as it continues so).

This does not mean that List One R/Sers who are twinned up with other List One R/Sers may be retwinned with non-List One R/Sers.

A known List One R/Ser going into the RPF is to be twinned up only with another List One R/Ser.

"ANY OF THESE PEOPLE CAN BE HANDLED." —LRH

COMMODORE'S MESSENGER

as ordered by
L. RON HUBBARD
COMMODORE

LRH:CMSNGR;jh:ed

Unpublished Work: © created 1977, 1997 CSI.
All Rights Reserved

Grateful acknowledgment is made to L. Ron Hubbard Library for permission to reproduce selections from the copyrighted works of L. Ron Hubbard.

8 May 1997

All SO Orgs and Units
RPFs
Senior Quals
Senior HCOs
Security Hats

RPF Series 29

RPF USE OF THE ADVANCED COURSE MATERIALS

References:

HCO PL 11 Aug. 71 V	SECURITY OF DATA
HCO PL 8 Jan. 81R	ADVANCED COURSE
Rev. 3.10.88	REGULATIONS AND SECURITY
HCO PL 9 Mar. 82RB	ELIGIBILITY FOR OT LEVELS
Rev. 6.1.85	

As there are circumstances where some RPF members need access to Advanced Course materials in order to get through their RPF technical program, security regulations regarding the use of these materials must be known and followed by those administering the RPF and by the RPF itself.

Access to upper-level materials is subject to a special license from RTC to the corporation which houses the CLO or the organization which the RPF is under (e.g., FLO, FLB). As the security of these materials is absolutely essential, they are to be used only under secure, tightly supervised conditions.

All upper-level materials used by the RPF must be kept in a highly secure space and employ the same high-tech security systems as an Advanced Organization. Before any of the Advanced Course materials can be obtained, the space allocated for this (including the full security system) must be fully set up and have Security Chief Int approval. Then a CSW with full evidence of this must be sent to RTC requesting okay to use the Advanced Course materials.

Once this space is in use, it is the responsibility of the base Security Chief to enforce security of these materials at all times.

The base Security Chief is fully responsible for seeing that the RPF totally adheres to all Advanced Course security rules and regulations and for handling any violations. He must inspect and verify that Advanced Course materials and pre-OT folders are securely stored, that there is a separation of upper-level co-audit spaces and, where needed, soundproofing of walls between auditing spaces.

The base Security Chief must also ensure that weekly inventories are done by an OT staff member (not an RPF member) to ensure all materials given out to the RPF are accounted for and secure.

In cases where an RPF member needs to start an OT level (as adjudicated by the C/S), the RPF member must do the Eligibility for OT Levels step per HCO PL 9 Mar. 82RB, ELIGIBILITY FOR OT LEVELS. Once this is done, a CSW for the RPF member to start the OT level must be originated by the RPF C/S via the RPF MAA, RPF I/C, base Security Chief and Cont Senior C/S to RTC.

The RPF member must get an okay the *first* time he starts on any Advanced Course, while in the RPF. Any okay prior to being on the RPF is invalid, and the OT Eligibility and CSW must be done in a new unit of time. A CSW is not needed

for each subsequent level, except New OT V. There, he again must get a full OT Eligibility check and submit a new CSW for okay to begin this level.

It is the responsibility of the RPF I/C to ensure that the RPF member has okay from RTC to start the level and has signed a non-disclosure bond, before he is allowed on the level.

All general rules and regulations with regards to the storage and use of Advanced Course materials apply as per HCO PL 8 Jan. 81R, ADVANCED COURSE REGULATIONS AND SECURITY.

SUMMARY

These rules are laid out to guarantee the security of Advanced Course materials, while also allowing access to those RPF members who require these materials as part of their RPF program.

As LRH said in HCO PL 11 Aug. 71 V, SECURITY OF DATA:

“Until we ourselves have climbed well out of the hole, we must safeguard the materials. Our case gains depend on it. And others could make our salvage of people impossible.

“We do *not* safeguard these materials from any commercial consideration. Our futures, those of each of us and those of all Scientologists, depend on our keeping this material under lock and safeguarded from abuse until we are well away as a group and can handle things better as individuals as well as a group.”

LRH TECHNICAL RESEARCH
AND COMPILATIONS

Authorized by
AVC INTERNATIONAL

for
CHURCH OF SCIENTOLOGY
INTERNATIONAL

CSI:SF:RTRC:ed

SEA ORGANIZATION

FLAG ORDER 3434RE-30

19 January 1985
Revised 8 May 1997

All SO Orgs and Units
RPFs
Senior Quals

(This Flag Order was issued as FO 1701R, RPF Series 14, THE RPF'S RPF. It has been revised to delete arbitraries, correct the FO and RPF Series numbers and the signatory. Revisions not in script. FO 1701, THE MUD BOX BRIGADE, which was incorrectly cancelled by FO 1701R is hereby reinstated.)

RPF Series 30

THE RPF's RPF

The RPF's RPF is a group within the RPF for those individuals who severely interrupt their own or others' progress towards redemption and have thus dropped into a condition of Liability or lower to the RPF itself. It's the RPF for the RPF. Any member who cuts across the one chance he or another has been given for redemption has avowedly disenfranchised himself from the group.

Those persons assigned to it are segregated from other members of the RPF in berthing, messing and job assignment. It consists of rigorous physical work that is of benefit to the RPF itself. Such jobs would include repair, construction and cleaning of RPF spaces—bathroom facilities, garbage detail, etc.

ASSIGNMENT

Assignment to the RPF's RPF originated by any RPF member must be approved by the RPF I/C. Such would normally be originated by the RPF Bosun or RPF MAA.

Any RPF's RPF assignment originated by a staff member outside the RPF, excluding the RPF I/C, must be authorized by AVC.

Offenses warranting assignment to the RPF's RPF include:

- a) Severely disrupting the progress of others on the RPF.
- b) Committing continual gross out-tech in the RPF.
- c) Missing withholds in the RPF.
- d) Demonstrating no progress towards redemption or preventing others from redeeming themselves.
- e) Displaying an attitude that "It doesn't matter" when messing up people or equipment.
- f) Serious crimes causing the Church extreme burden, withheld and discovered after assignment to the RPF. In this case, the RPF's RPF assignment may only be carried out with AVC approval.

A Sea Org member may also be sent straight to the RPF's RPF for exceedingly gross and destructive acts.

REGULATIONS

A member of the RPF's RPF is subject to all regulations of the RPF plus the following:

- 1) Enters the RPF's RPF in a condition not higher than *Liability to the RPF*.
- 2) Is segregated from the other members of the RPF in berthing, messing and work. Must stand in a separate line at musters.
- 3) Is under the RPF MAA for all matters, including production. The RPF MAA may designate another to supervise his or her production.
- 4) May not speak to any crew member nor may they speak to him/her. May not speak to other members of the RPF unless spoken to. His sole point of communication is to the RPF MAA or the RPF MAA's designated assistant within the RPF.
- 5) Puts in additional deck work each day, however, this would not be done in violation of RPF curfews.
- 6) Is permitted to handle ethics, study or co-audit for 2 1/2 hours a day as designated by the RPF MAA. This must be done in a space separate from the rest of the RPF.
- 7) May not rejoin the RPF until *Liability* formula has been applied, has obtained majority permission from the RPF per step 4 of the formula and has approval from the RPF MAA.
- 8) Time on the RPF is extended one month beyond completion requirements by reason of having to be assigned to the RPF's RPF. This penance is logged in the person's ethics file for record and enforcement. If an RPF member is assigned to the RPF's RPF more than once, an additional month is logged for each assignment.

TWINNING

When an RPF member is assigned to the RPF's RPF, his twin goes as well to help him or her through all steps necessary to get out of *Liability* to the RPF as a group.

This is in keeping with HCOB 21 Aug. 79, TWINNING, wherein twins are responsible for getting each other *through*.

This rule is also particularly fitting to the test of a Project Force Person:

"CAN HE OR SHE MAKE SOMEBODY BETTER? NOT GET BETTER, BUT MAKE SOMEBODY ELSE BETTER."
—LRH, FO 3434RE-5, RPF Series 5, TEST OF A PROJECT FORCE PERSON.

100% standard application of all ethics tools is the answer for anyone assigned to the RPF's RPF so that he or she may honestly move up out of low conditions toward the RPF itself.

The end product is demonstration in the physical universe that he or she is in fact a constructive and contributive *RPF* member who can make progress toward his or her own redemption and that of another.

CAUTION

Left to their own devices, people will often misuse ethics for harmful means. And, having ethics and case trouble themselves, those in the RPF can have a tendency to abuse ethics. (Ref: LRH Lecture of 18 May 1965, ORGANIZATION AND ETHICS)

Hence, improper use of the RPF's RPF or gross misapplication of the RPF's RPF must result in a Comm Ev on the offender on a charge of USING SCIENTOLOGY HARMFULLY.

The RPF is what it says: Rehabilitation. Ethics certainly plays a part, but this is ethics per the Scientology definition:

"Ethics are the actions an individual takes on himself in order to accomplish optimum survival for himself and others on all dynamics." —LRH, HCO PL 9 July 80R, ETHICS, JUSTICE AND THE DYNAMICS.

THE ABOVE IS TO BE ENFORCED BY THE RPF I/C, BOSUN AND MAA.

LRH TECHNICAL RESEARCH
AND COMPILATIONS

Authorized by
AVC INTERNATIONAL

for
CHURCH OF SCIENTOLOGY
INTERNATIONAL

SEA ORGANIZATION

FLAG ORDER 3434RE-31

13 March 1984
Revised 8 May 1997

RTC
Senior C/S Int Office
Senior Quails
SO Orgs and Units
RPFs

(This Flag Order was originally issued as FO 3863-IRA, RPF Series 17R, [same title]. It is hereby revised to update post titles in accordance with modern org boards, to further clarify what evidence needs to be included in RPF graduation CSWs and to correct the FO and RPF Series numbers.)

RPF Series 31

RPF GRADUATION—ADDITIONAL DATA

Reference:

FO 3434RE-9

RPF Series 9

RPF GRADUATION

Before a person may be graduated from an RPF, he must be given final approval by a representative of the Office of Senior C/S International and the Inspector General Network of RTC, as per Flag Order 3434RE-9, RPF Series 9, RPF GRADUATION.

The routing of the RPF member's pc folders is as follows:

1. Approval by the Senior C/S over the RPF (not in the RPF).
2. Once approval is given, the folders are then forwarded to the Office of Senior C/S International.
3. On approval, folders are then forwarded to Religious Technology Center (RTC) for final okay to graduate.

The pc folders to be sent up are the folders which contain the last major action prior to the person being RPFed, and the auditing from there forward including all RPF co-audited actions.

Before being forwarded to the Senior C/S over the RPF or further up the lines, the pc folders must contain the following:

1. All filing of pc folder particles in PT and in chronological order. (Includes worksheets of Word Clearing, cramming, False Data Stripping, etc.)
2. An accurate and in-PT FES (which includes notations of errors corrected, updated to PT).
3. An accurate and up-to-date Folder Summary.
4. An up-to-date Case Progress Sheet.
5. A PT OCA and any earlier comparative OCA (including an OCA from when they started in the RPF).

6. Fully tabbed evidence that the technology of Sec Checking and PTS checking* for nonsurvival considerations and evil purposes on all dynamics has been standardly applied to rave results.

7. RPF final assessment videotape showing that nothing was missed.

A cover CSW is to be placed on top of the PT folder which clearly states WHY the person was assigned to the RPF (including the RPF assignment) and evidence clearly tabbed that this has been fully handled. Such would include, for example, graphs and reports received from the person's seniors in the RPF or others as concrete proof in the physical universe that his or her evil purposes have been handled and which show that the person's behavior and production record warrant graduation. The person's ethics folders must also be part of the CSW package. The primary point to be reviewed is that the evil purposes *have* been run out and *fully* dealt with as demonstrated by his or her conduct and actions.

If the CSW package is received with one or more of the above points omitted it will be returned as an incomplete CSW without further review until it is corrected.

LRH TECHNICAL RESEARCH AND COMPILATIONS

Authorized by
AVC INTERNATIONAL

for
CHURCH OF SCIENTOLOGY
INTERNATIONAL

CSI:SF:RTRC:ma

*For data on what "PTS checking for nonsurvival considerations and evil purposes on all dynamics" is, see HCOB 28 Feb. 84, C/S Series 118, PRETENDED PTS.